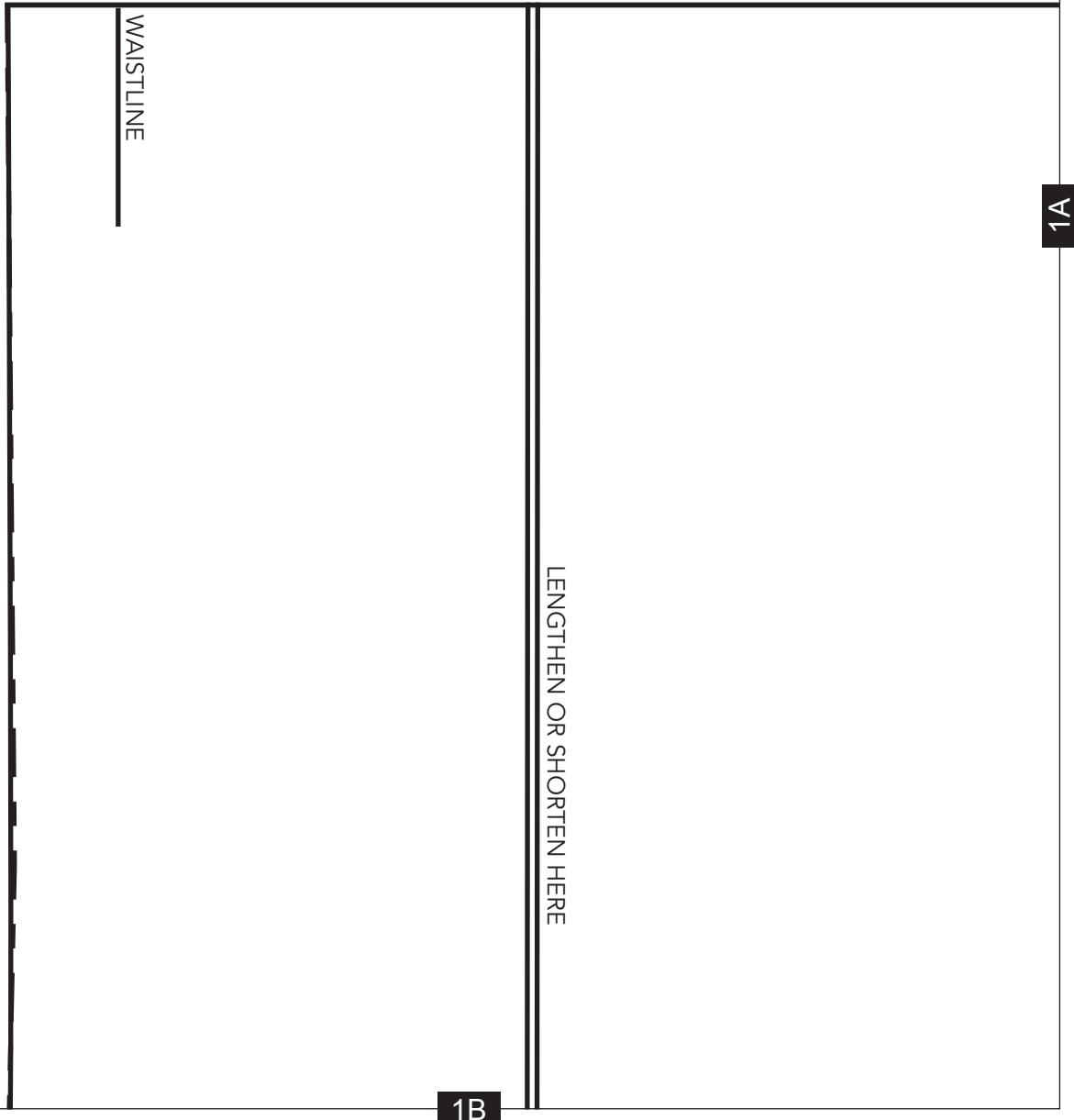
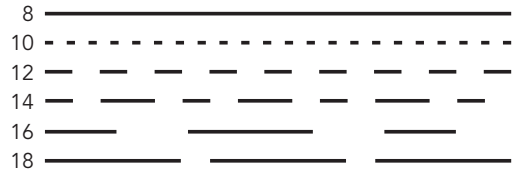


THE GREAT BRITISH *Sewing Bee*

Wrap dress pattern
Project design © Love Productions 2013
This design is protected by copyright
and must not be made for resale.



2A

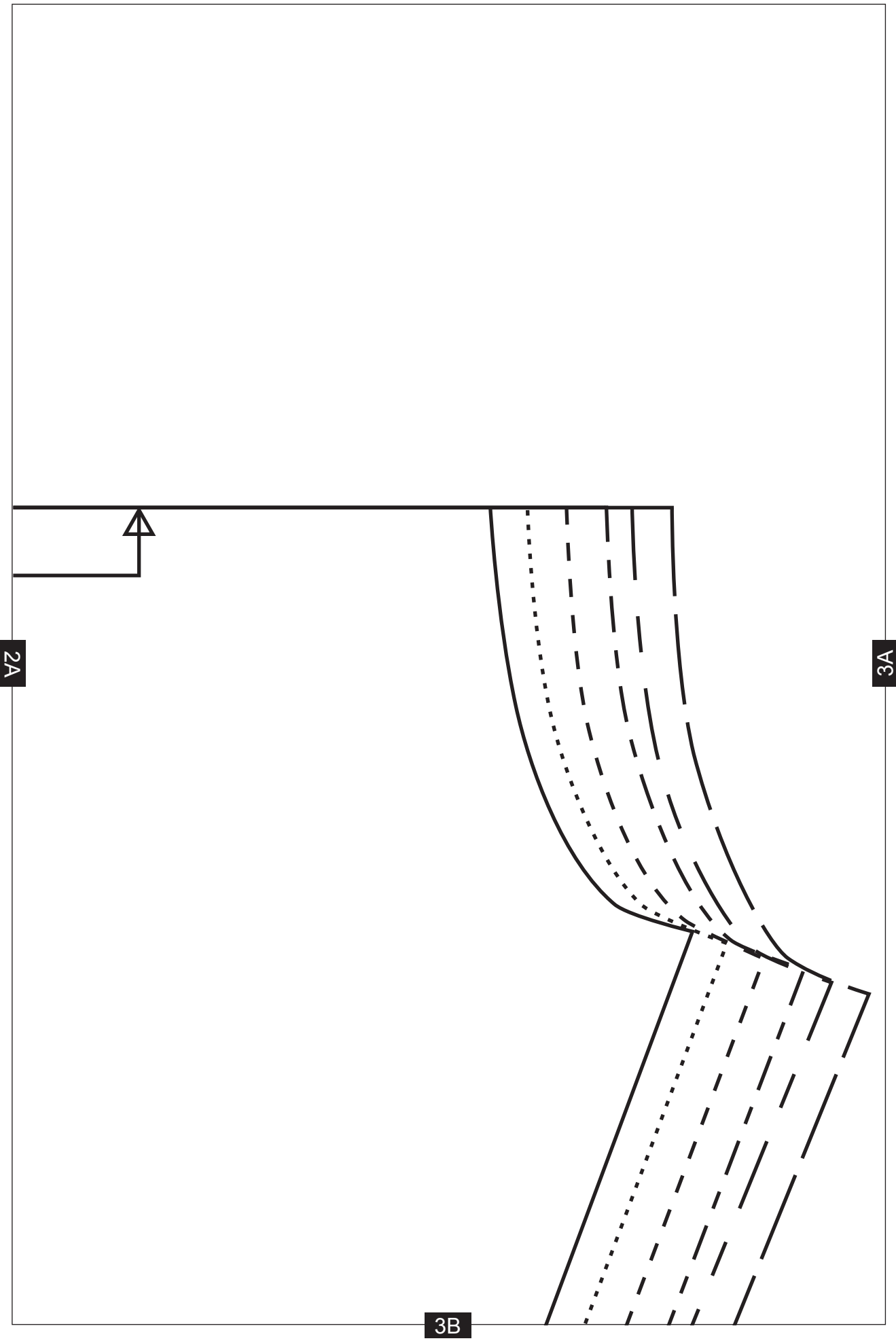
PLACE ON FOLD

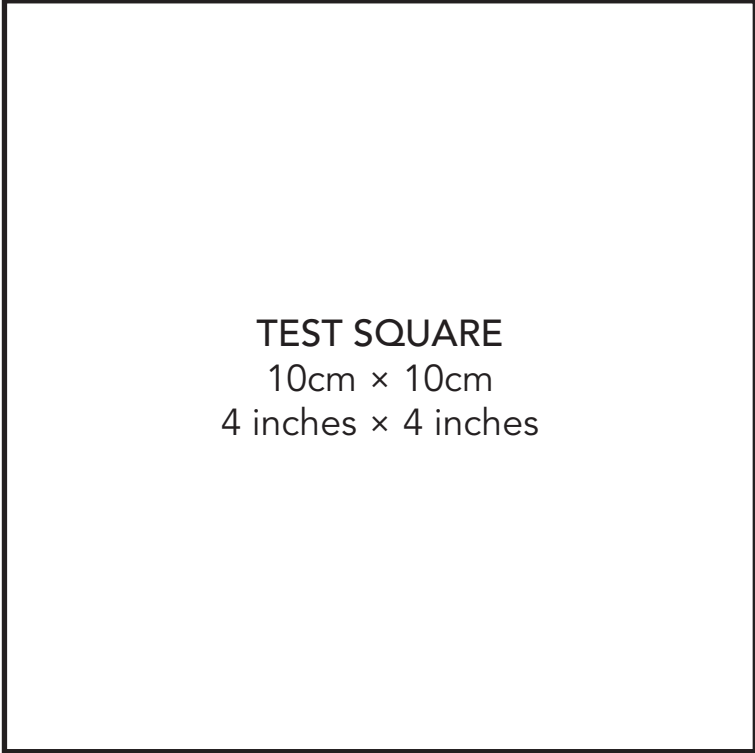


BACK BODICE

1A

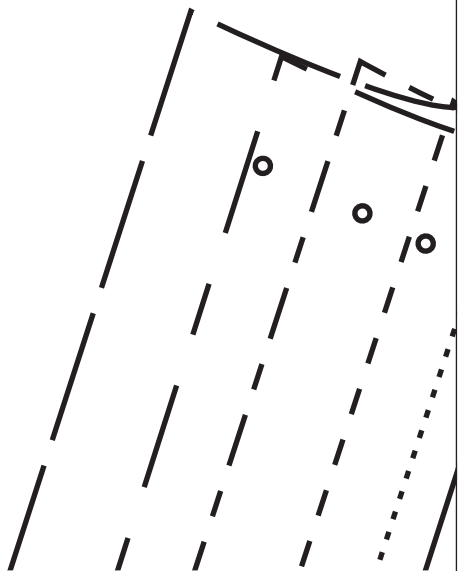
2B



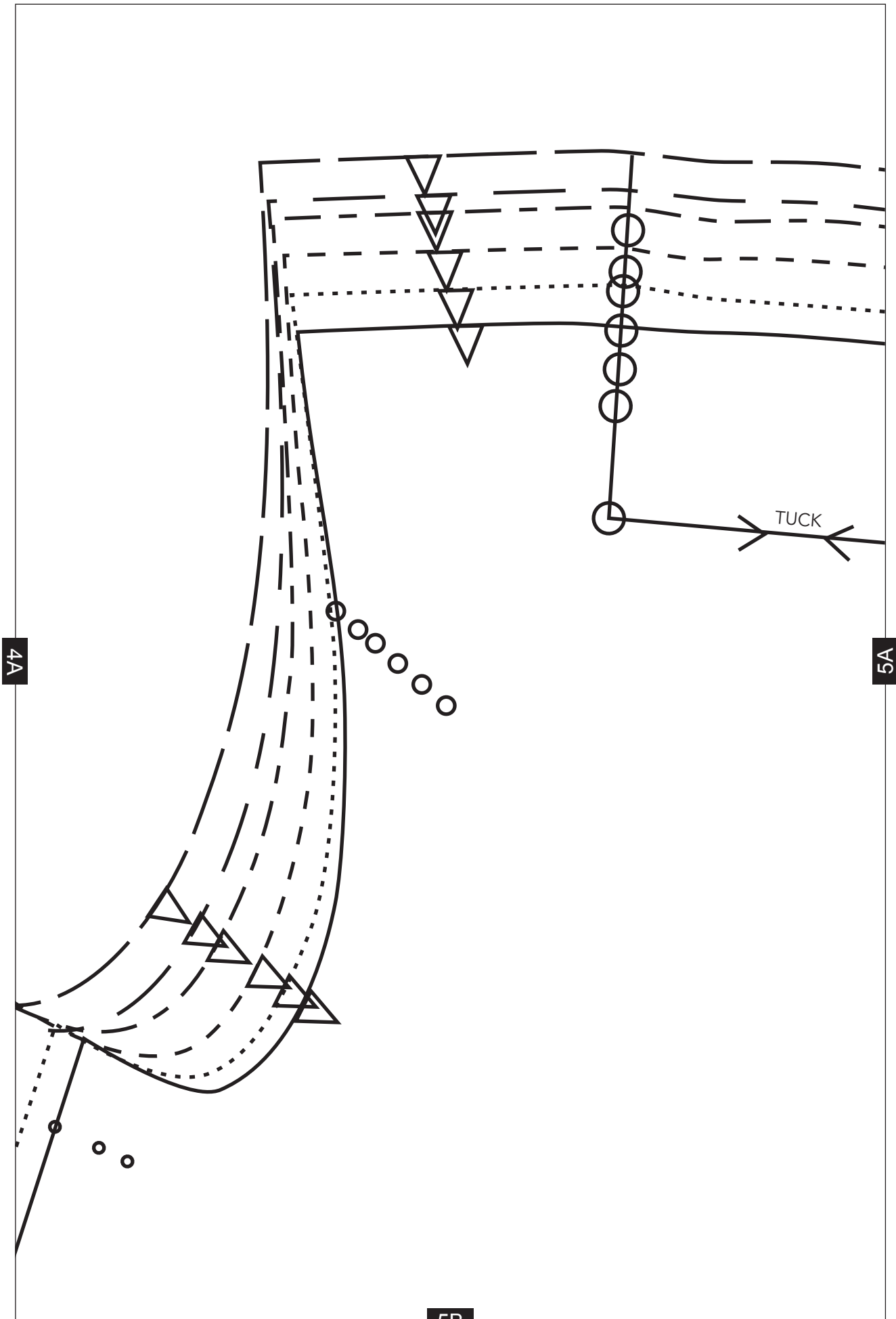


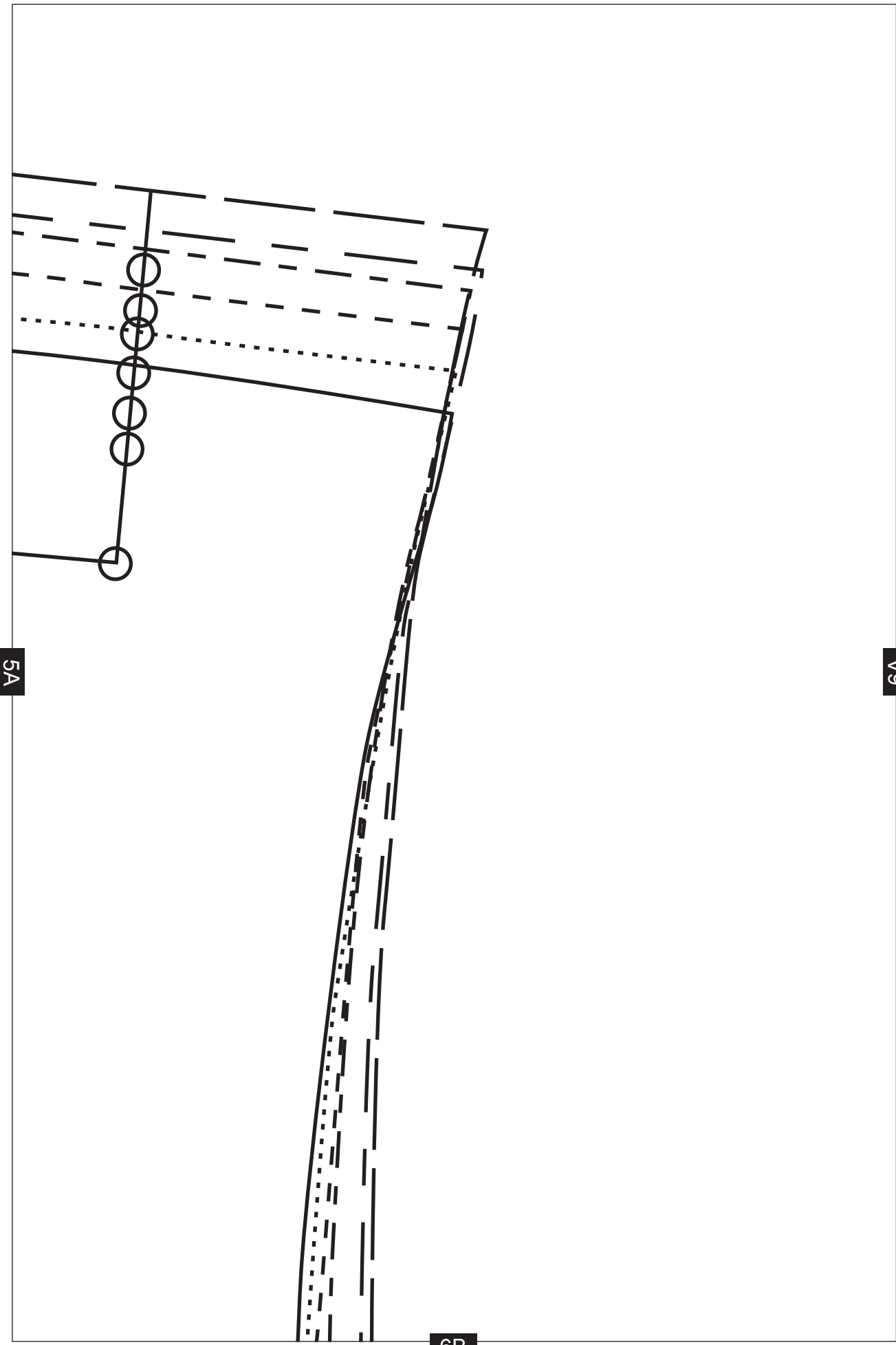
3A

4A



4B



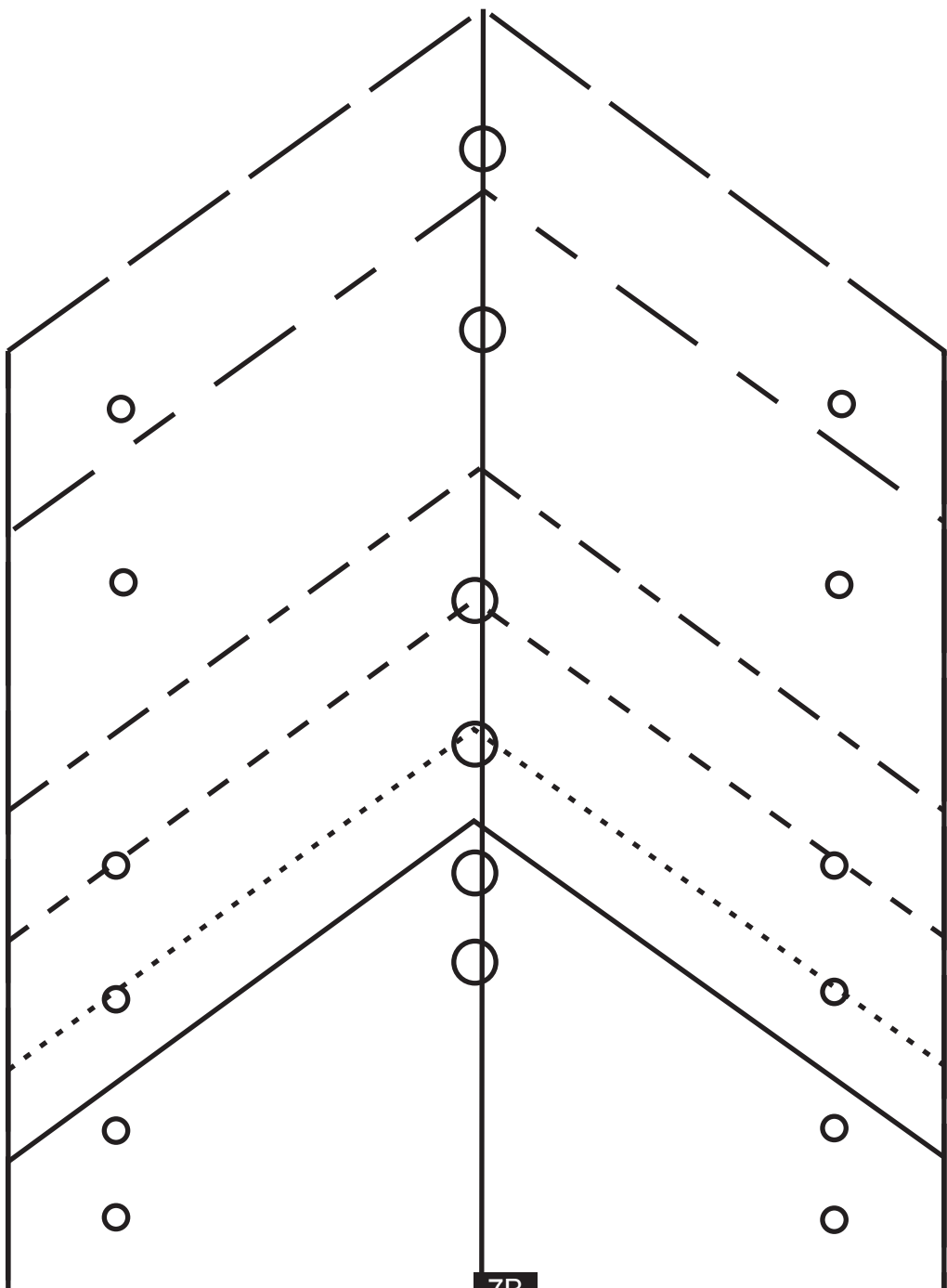


5A

6A

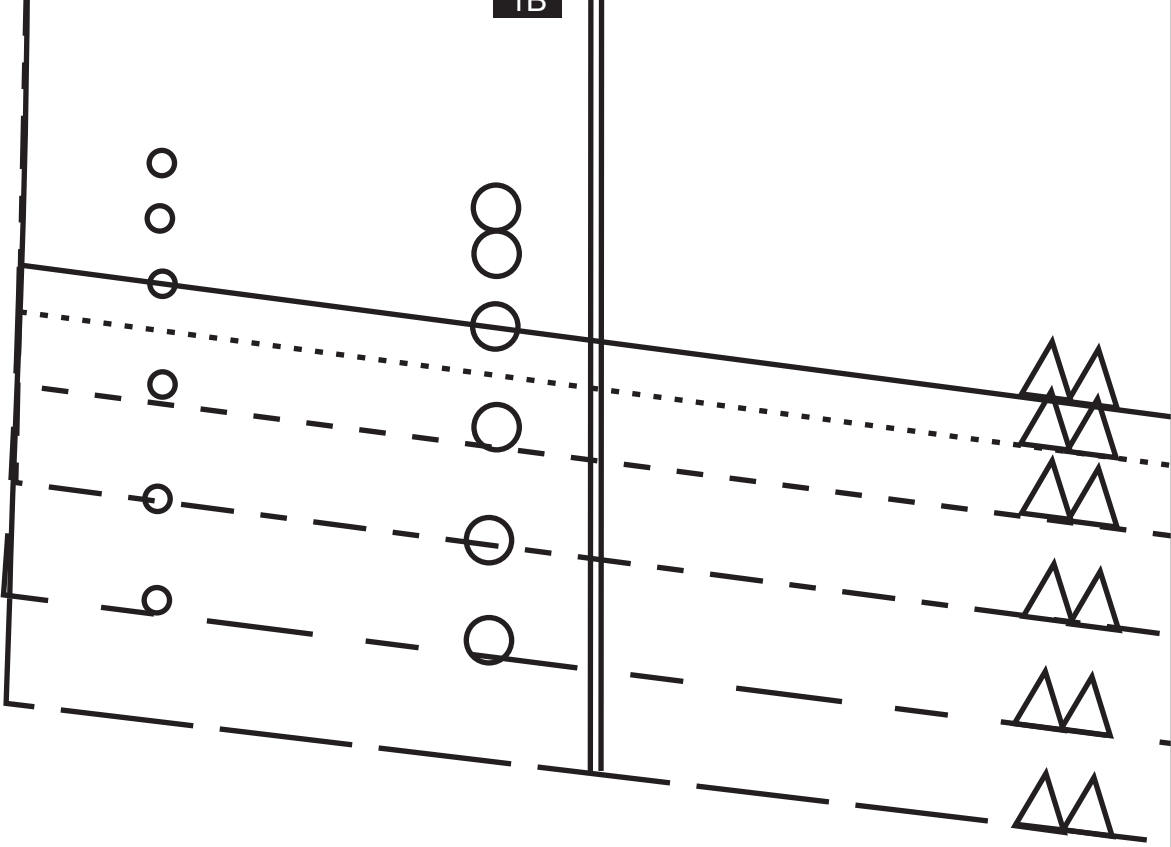
6B

6A



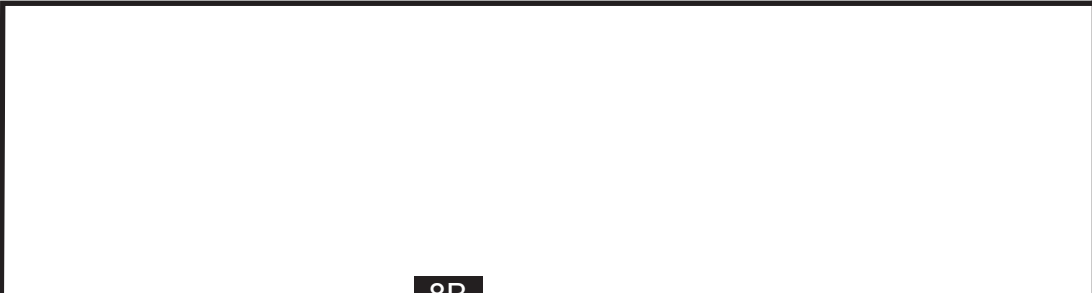
7B

1B

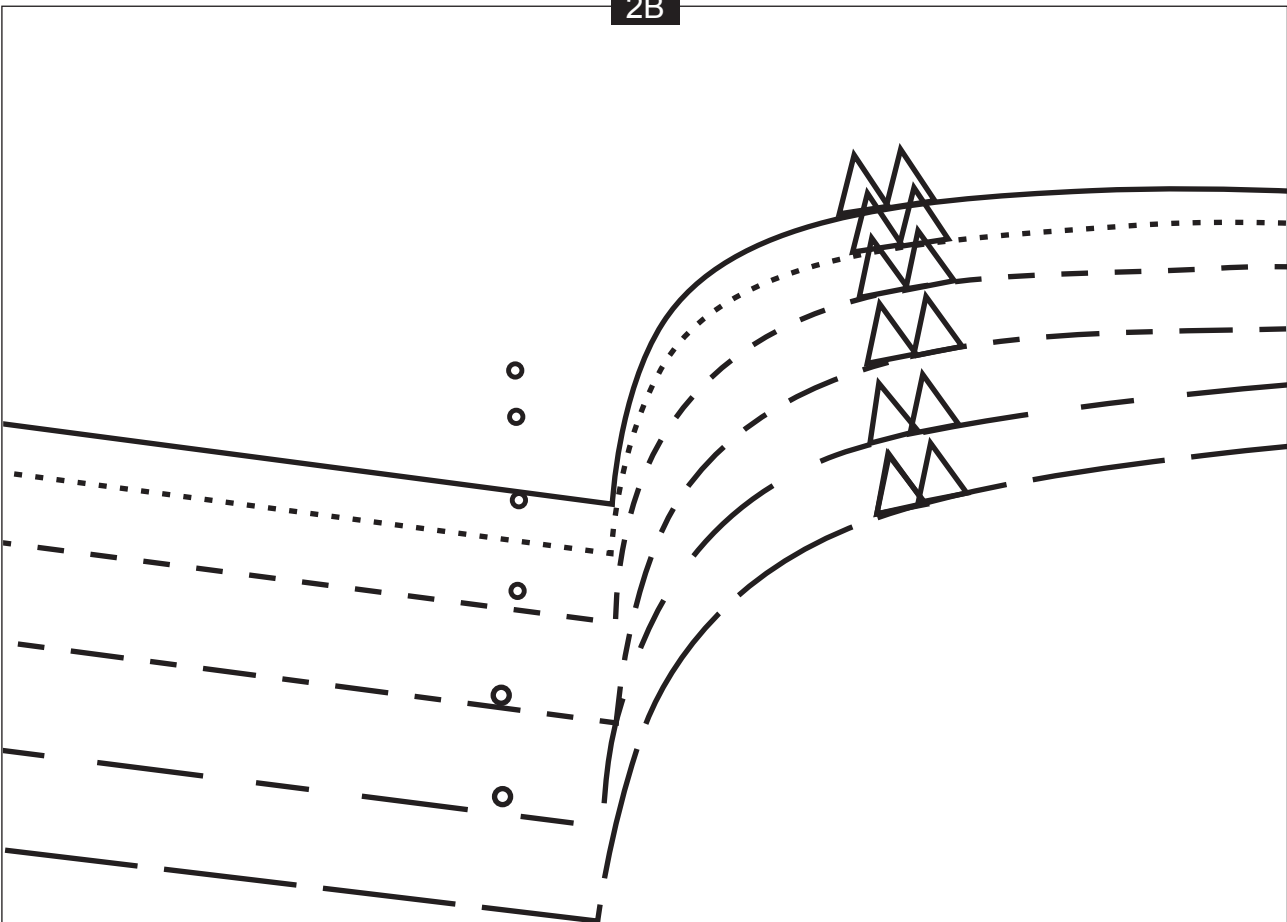


8A

8B



2B

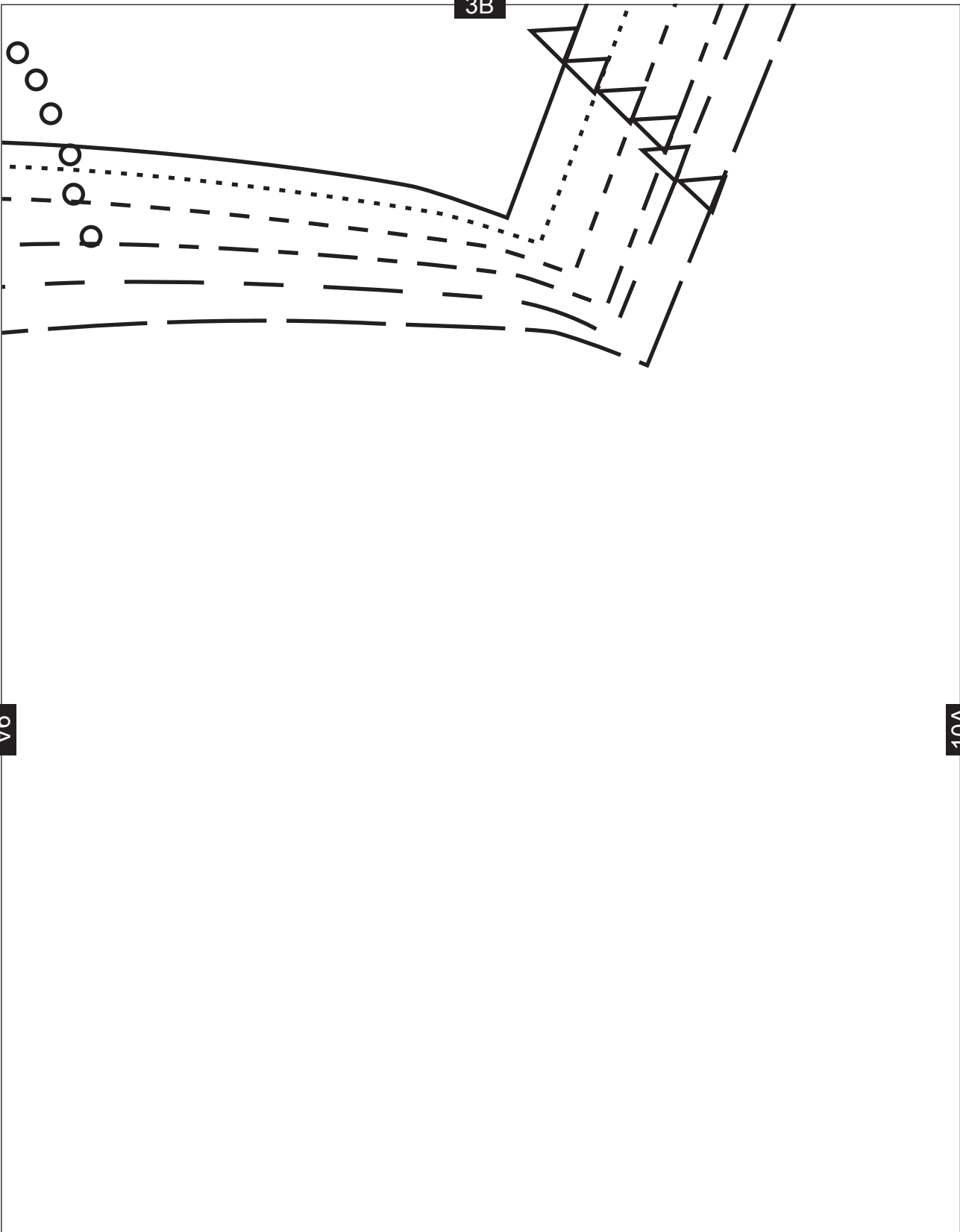


8A

9A

9B

3B



9A

10A

PLACE ON FOLD

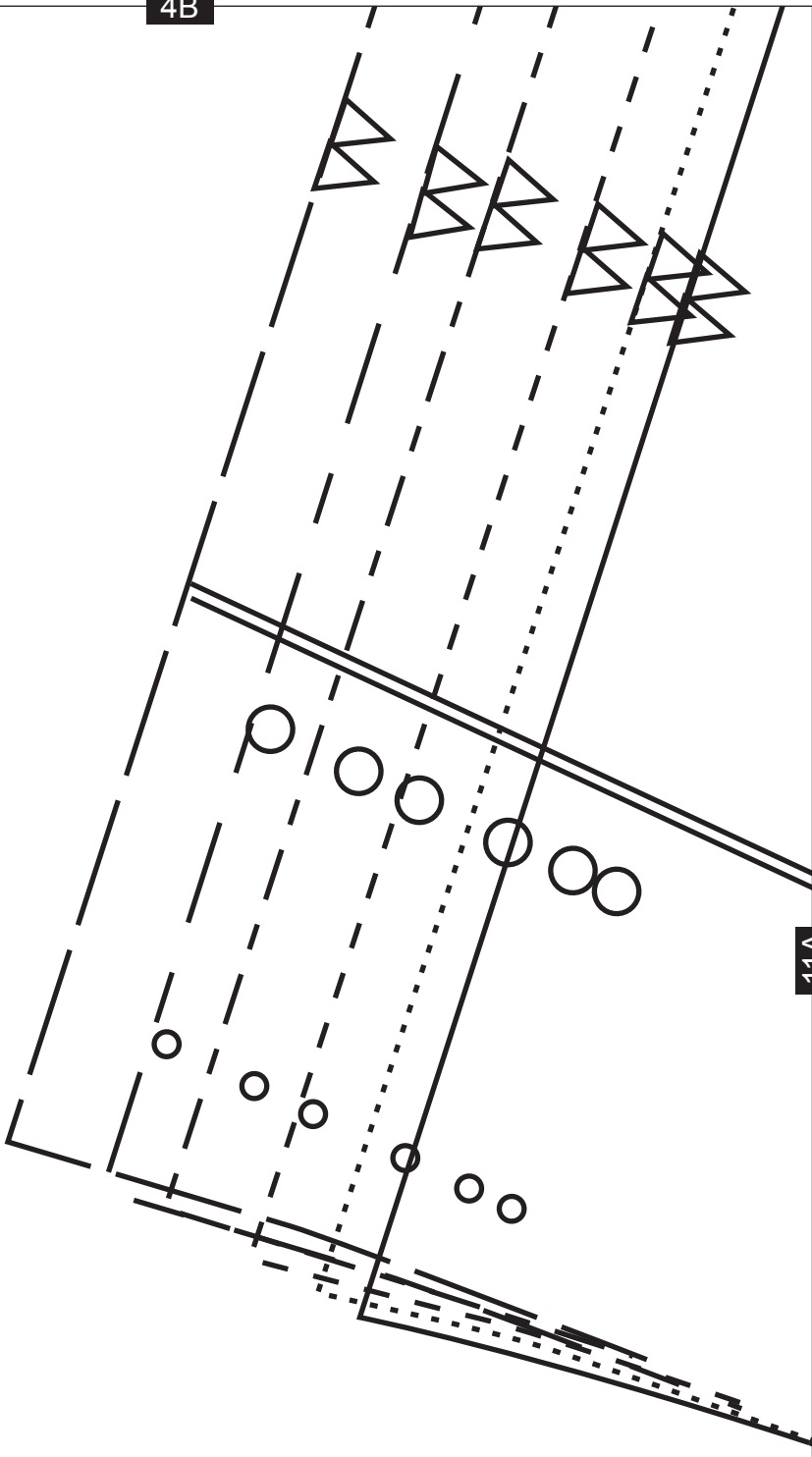
10B

4B

10A

11A

11B



5B

FRONT BODICE

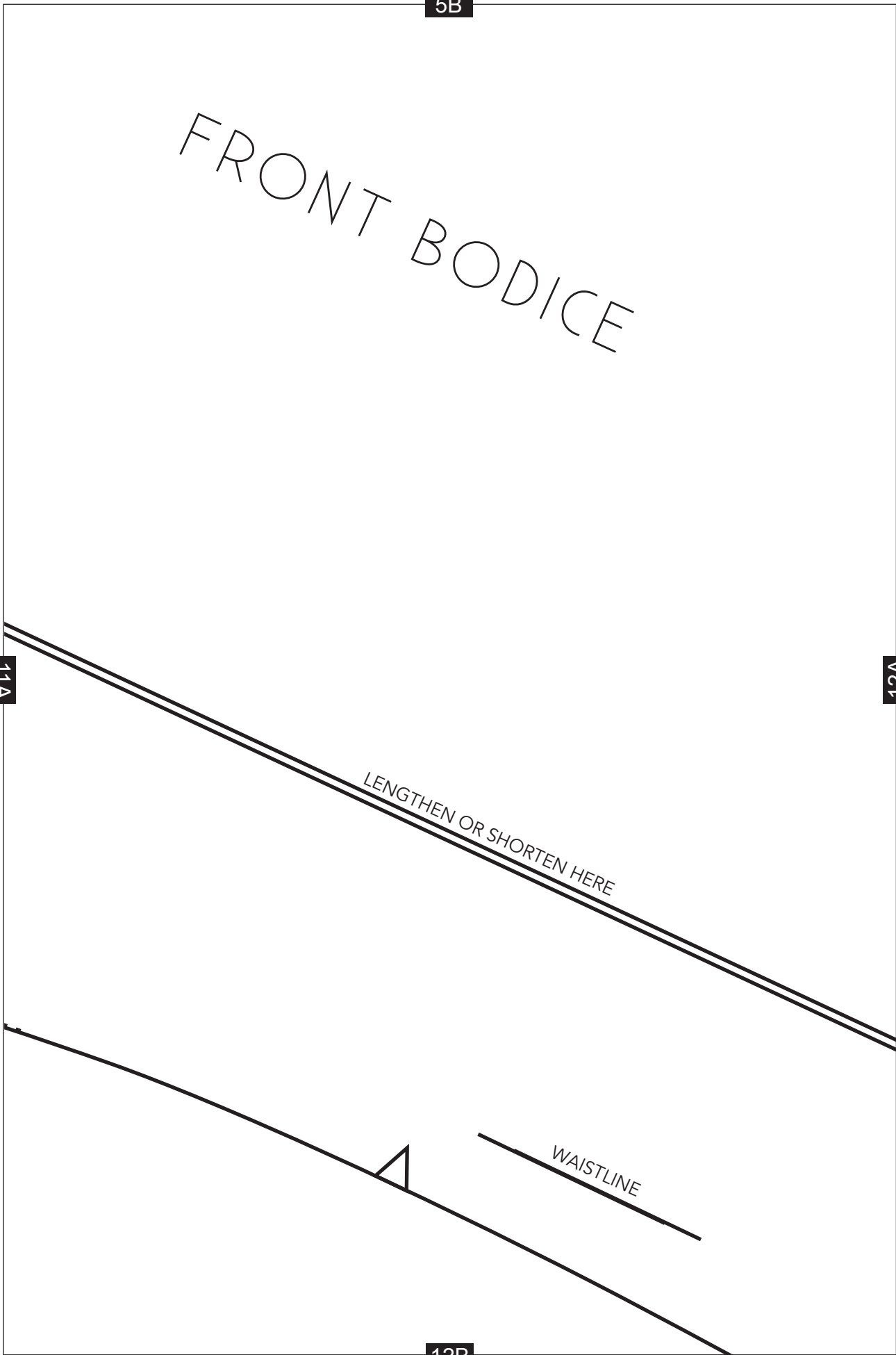
11A

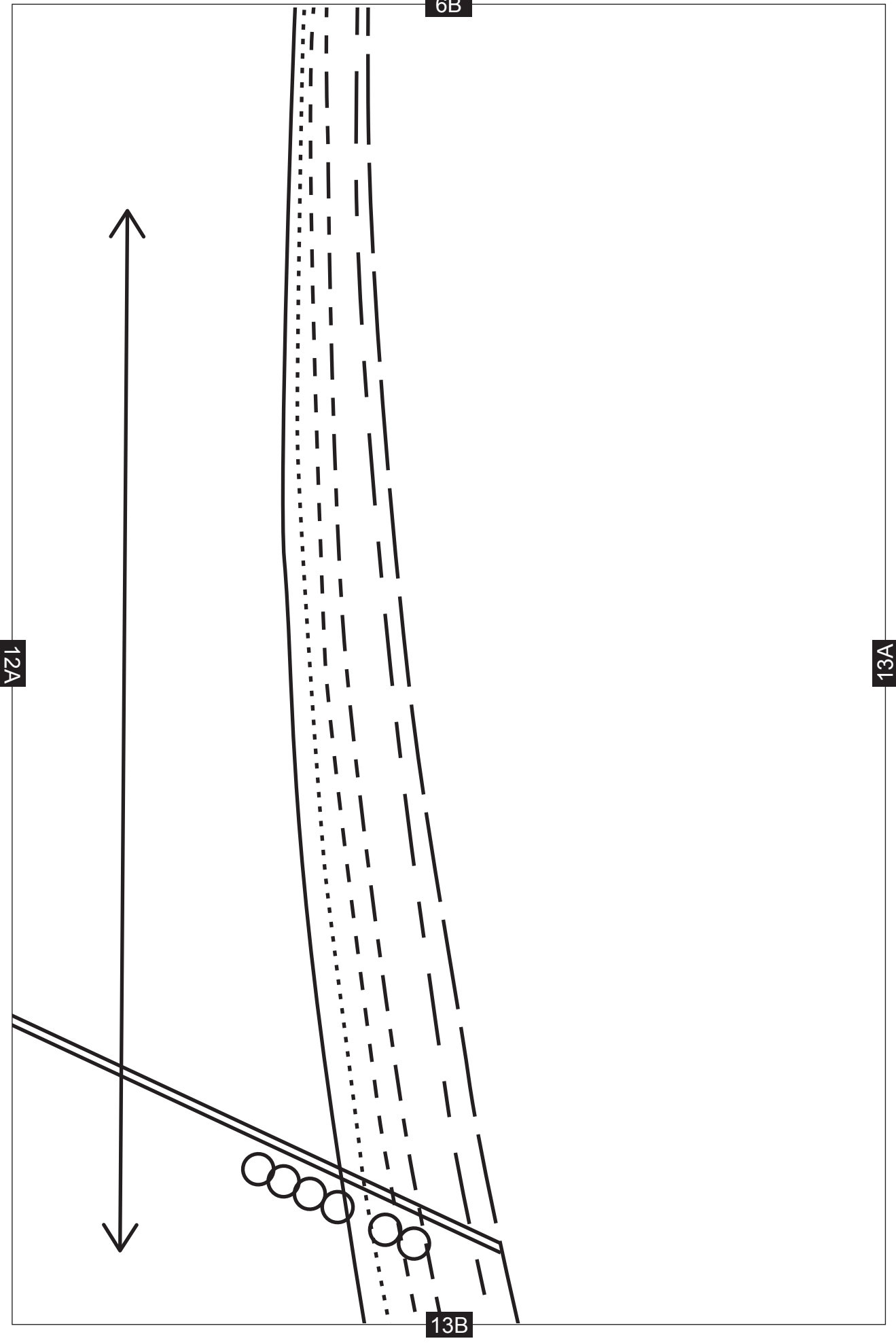
12A

LENGTHEN OR SHORTEN HERE

WAISTLINE

12B





13A

TIE END



7B

14B

8B

15A

15B

9B

SKIRT BACK

16A

16B

15A

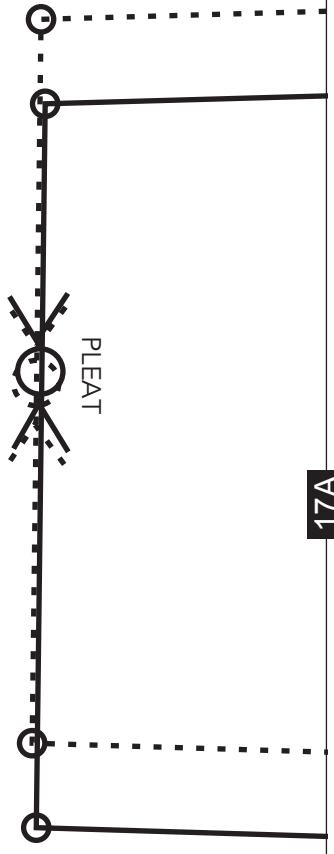
10B

16A

LENGTHEN OR SHORTEN HERE

17B

17A



11B

8-14

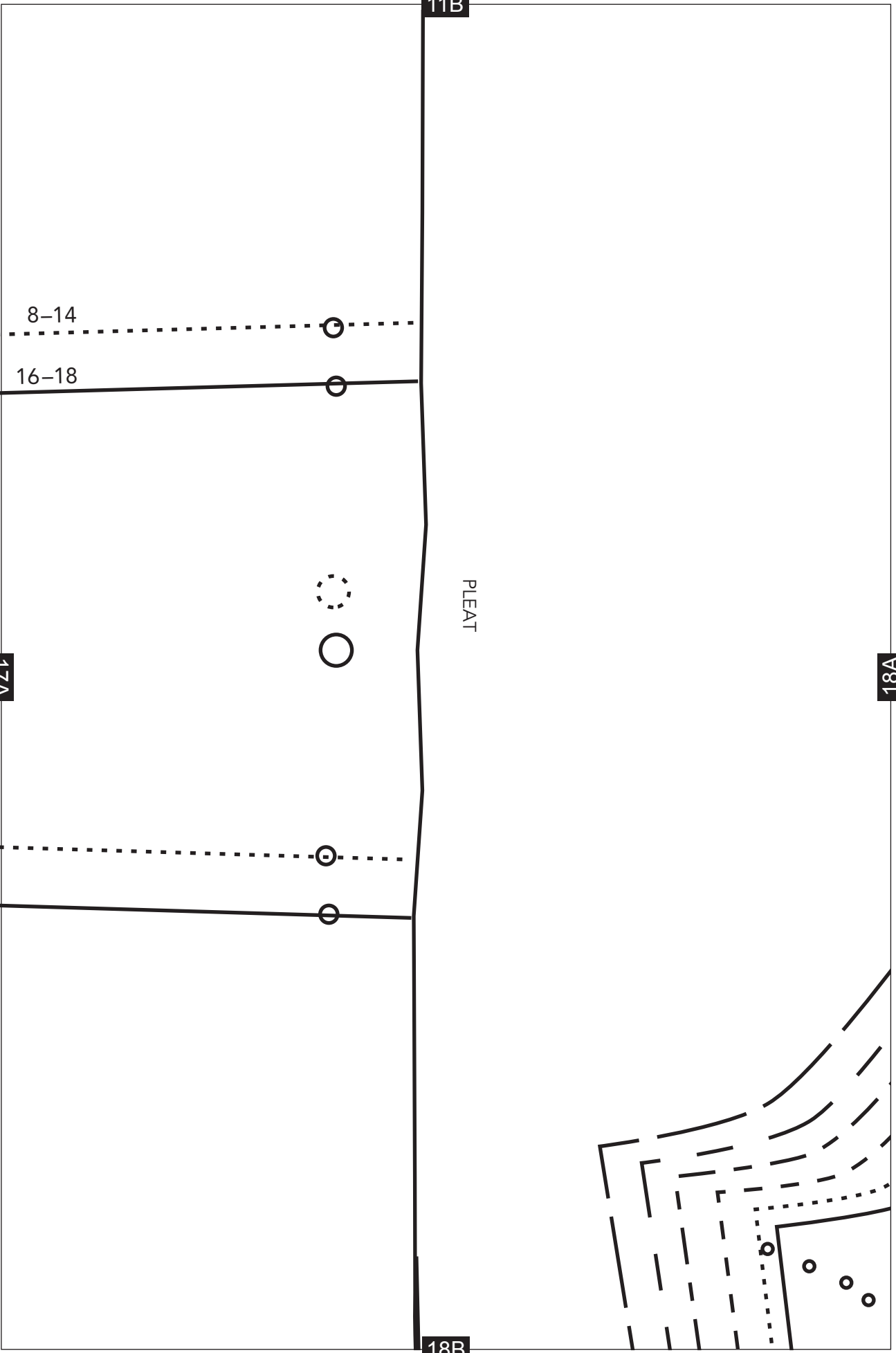
16-18

17A

PLEAT

18A

18B

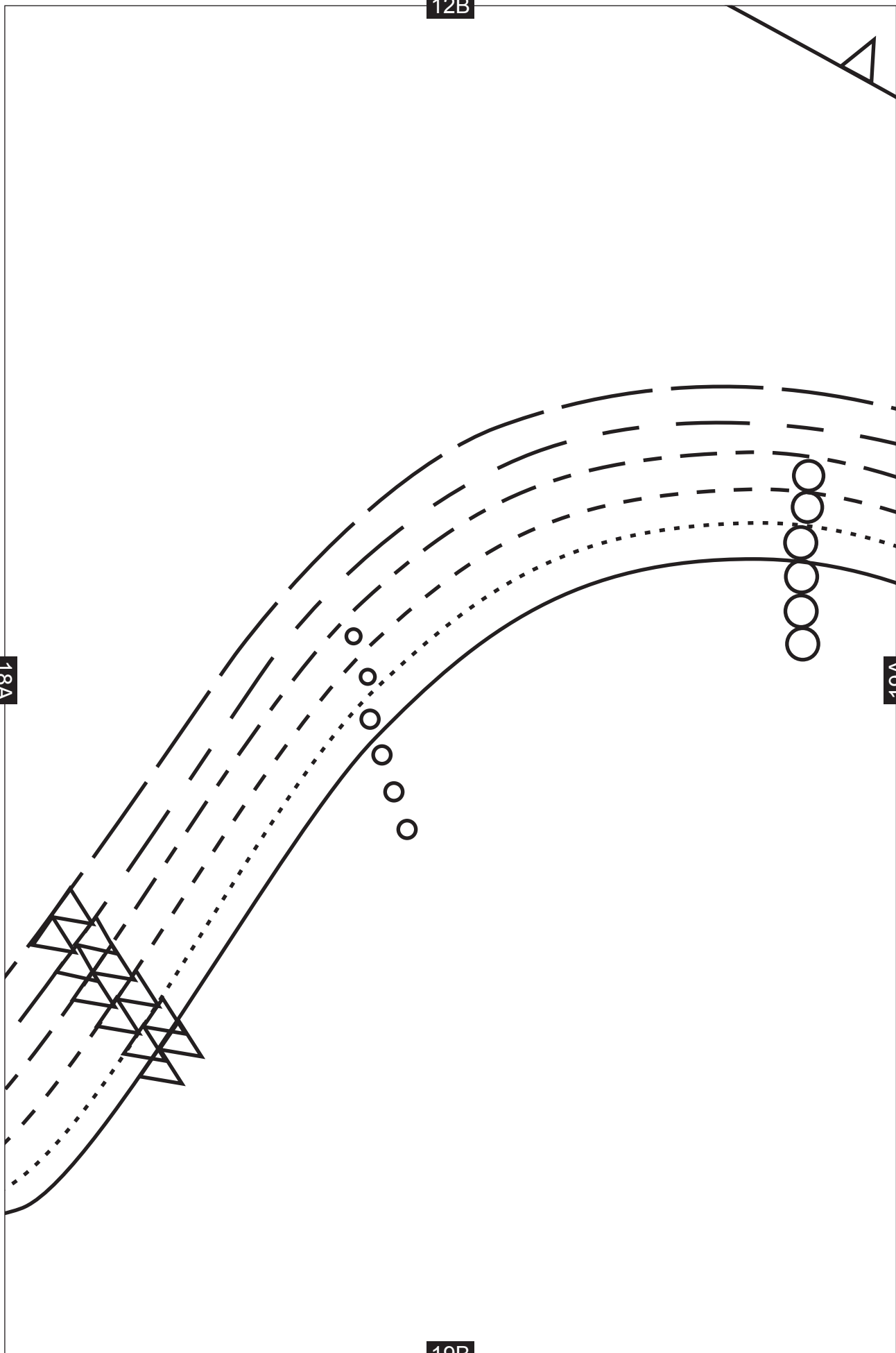


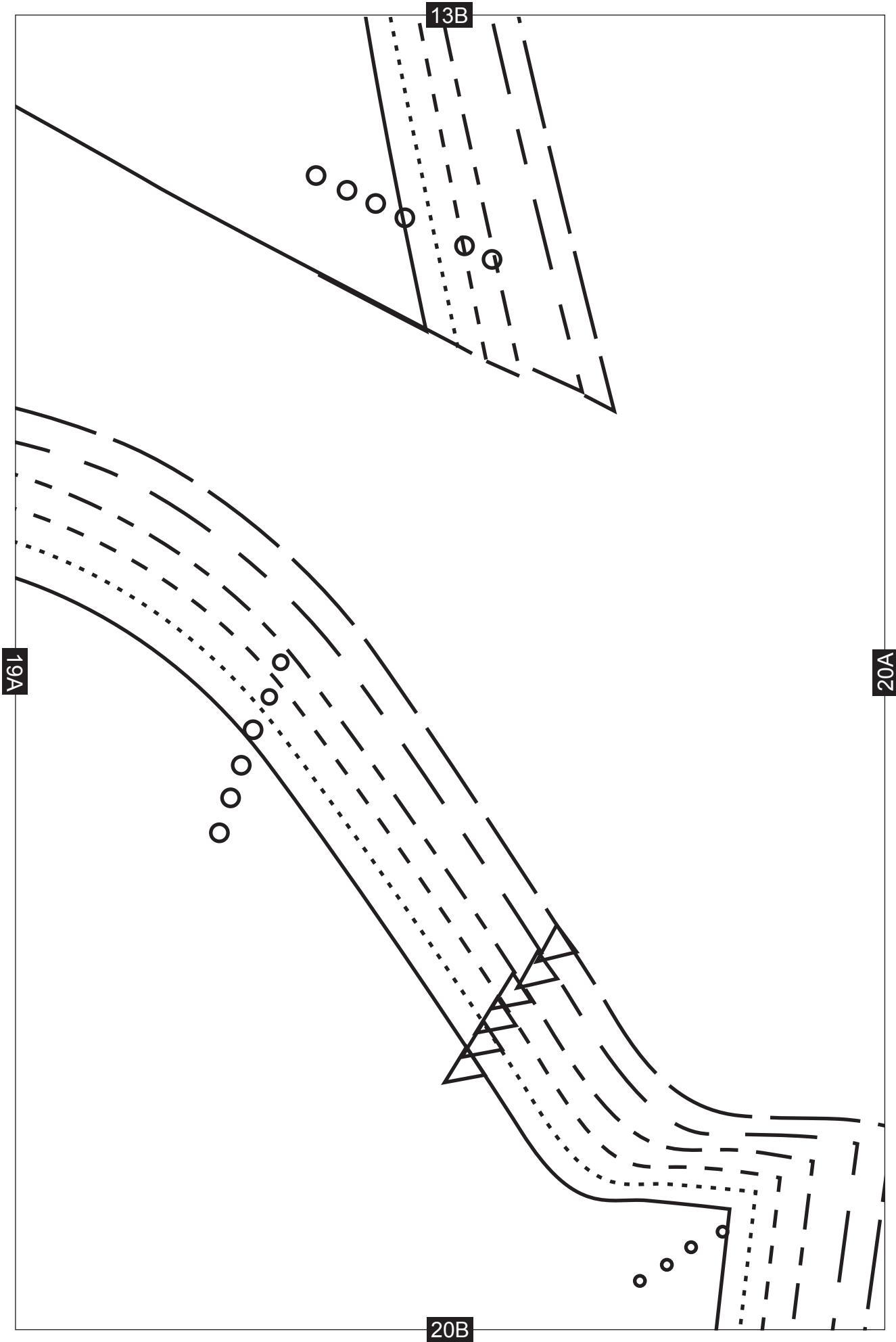
12B

18A

19A

19B



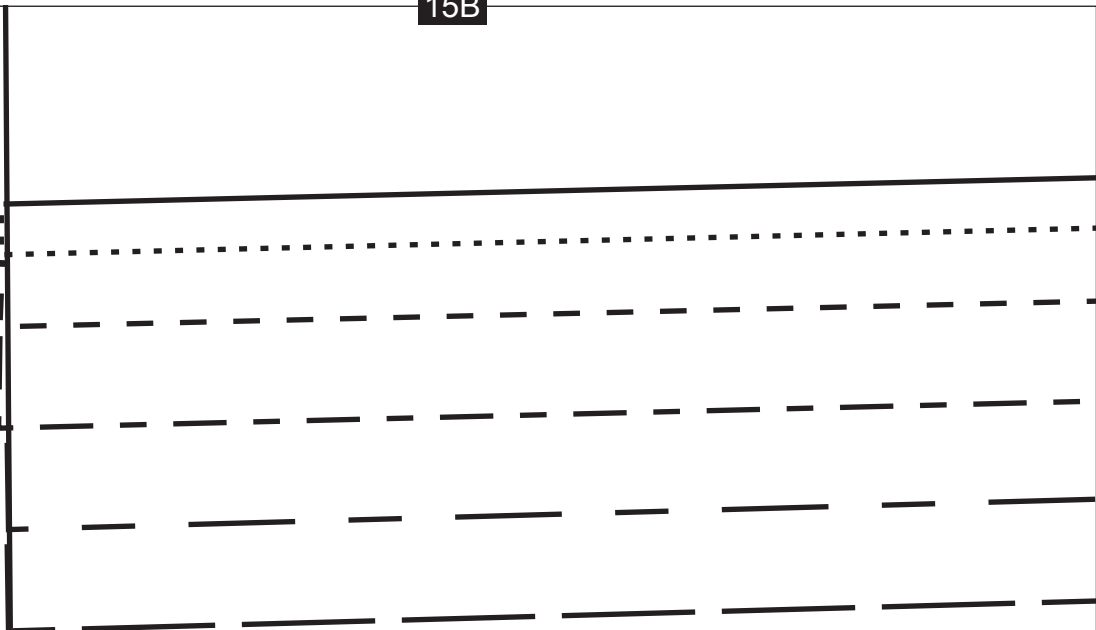


14B

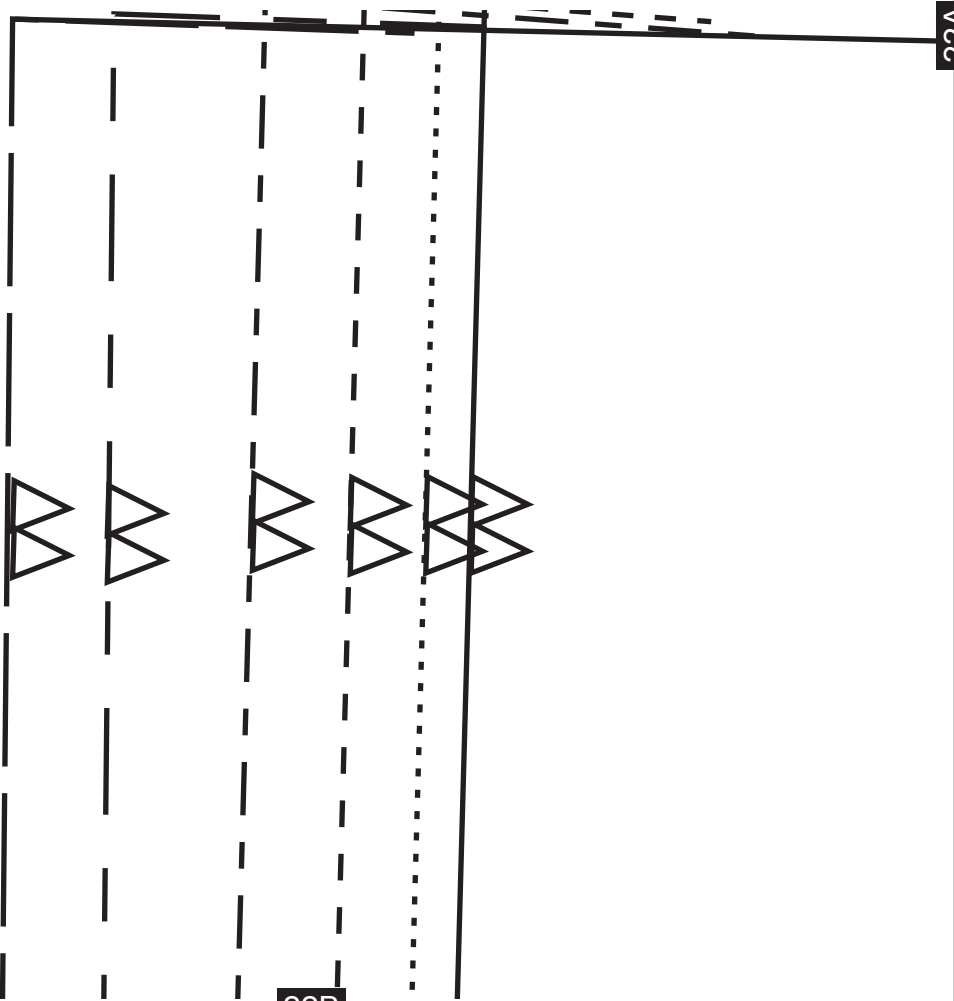
20A

21B

15B



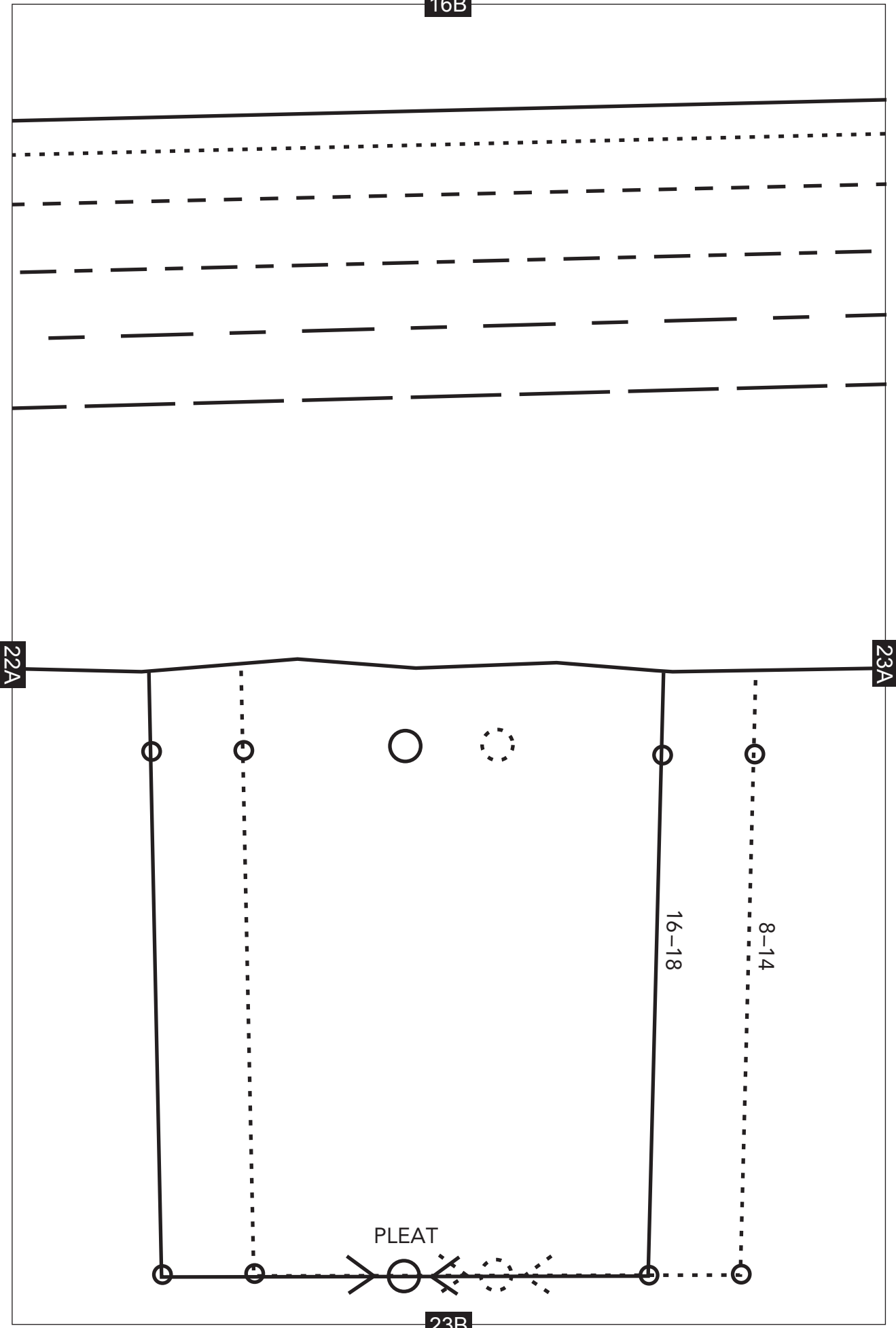
22A



22B



16B



22A

23A

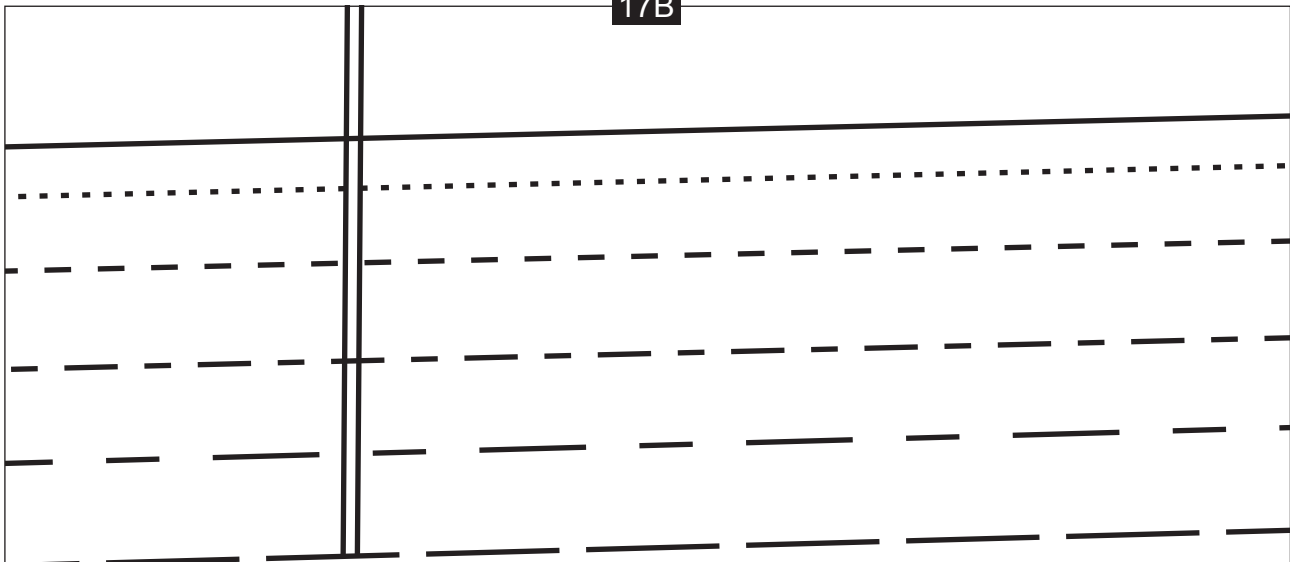
PLEAT

23B

16-18

8-14

17B

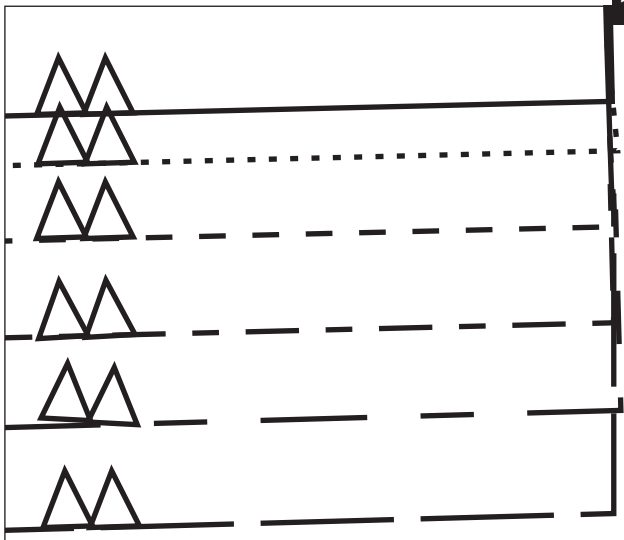


23A

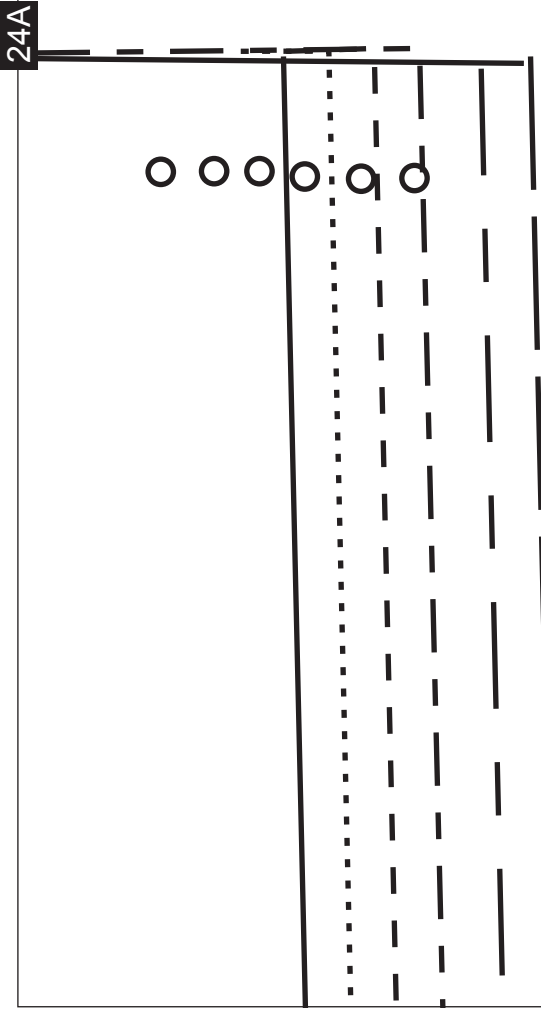
24A



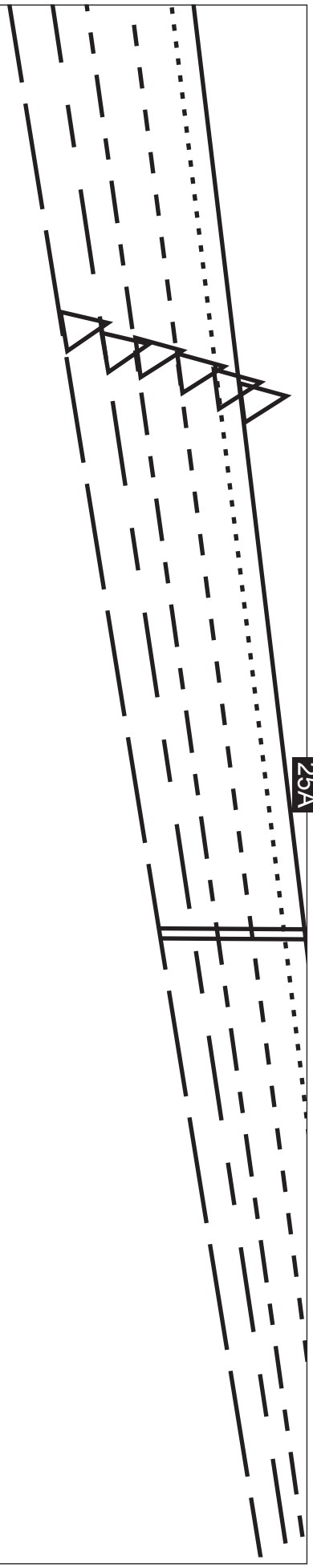
24B



18B



24A



25A

25B

19B

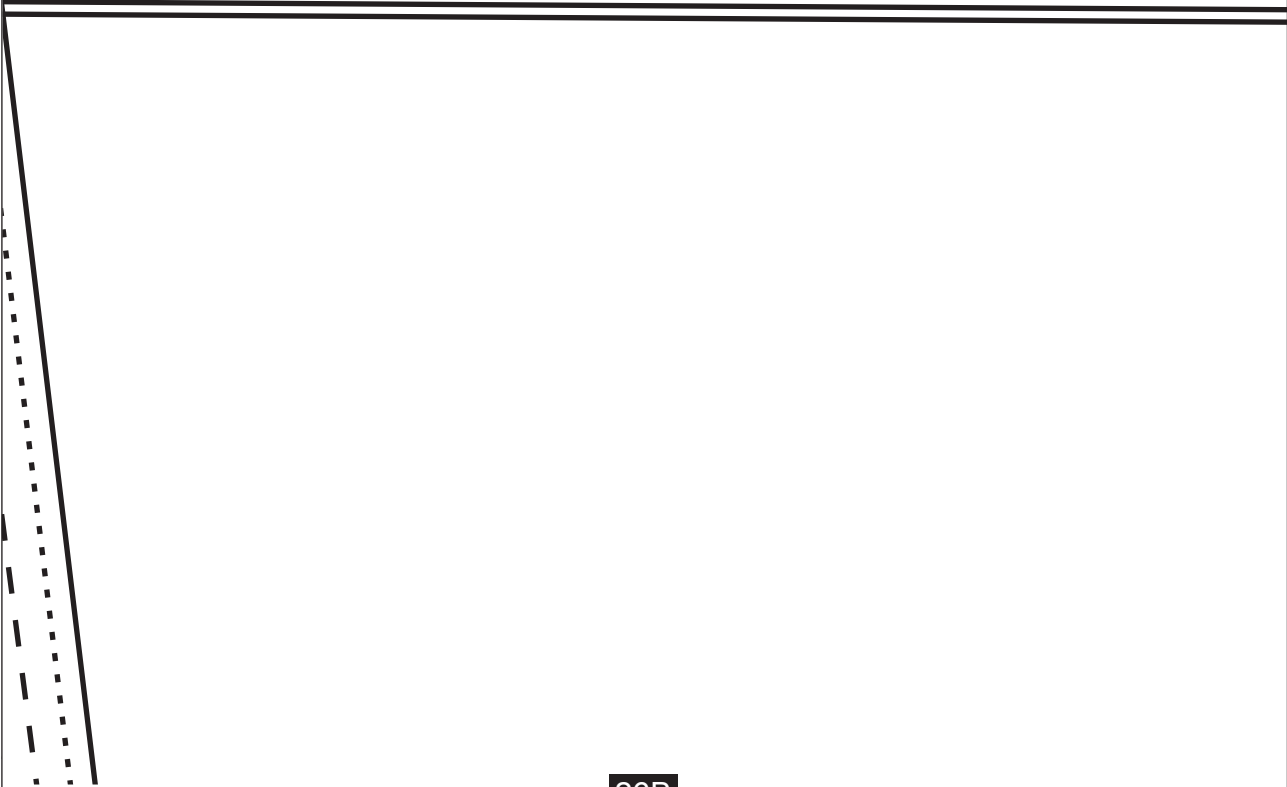
SLEEVE

25A

26A

LENGTHEN OR SHORTEN HERE

26B

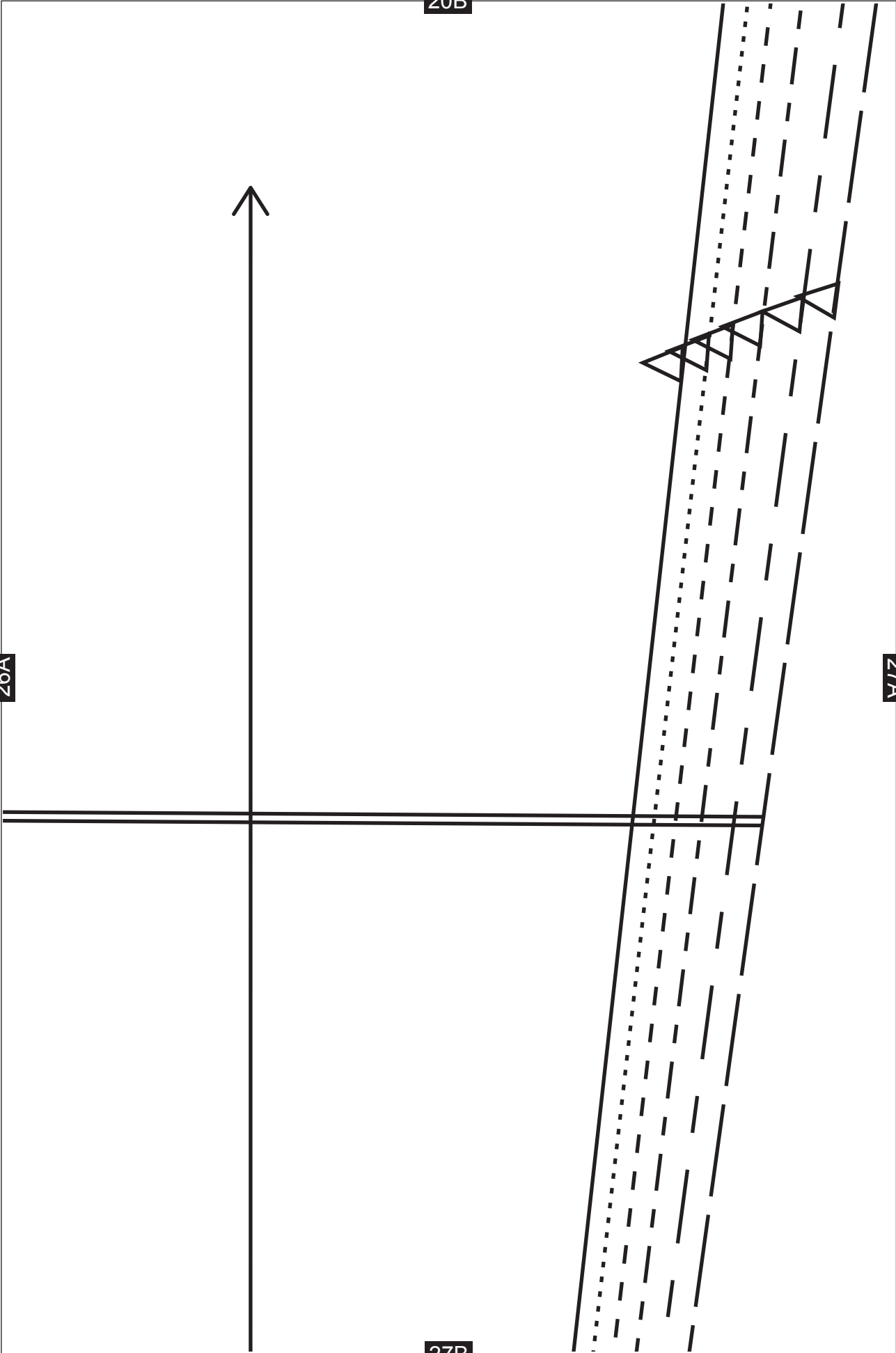


20B

26A

27A

27B



27A

21B

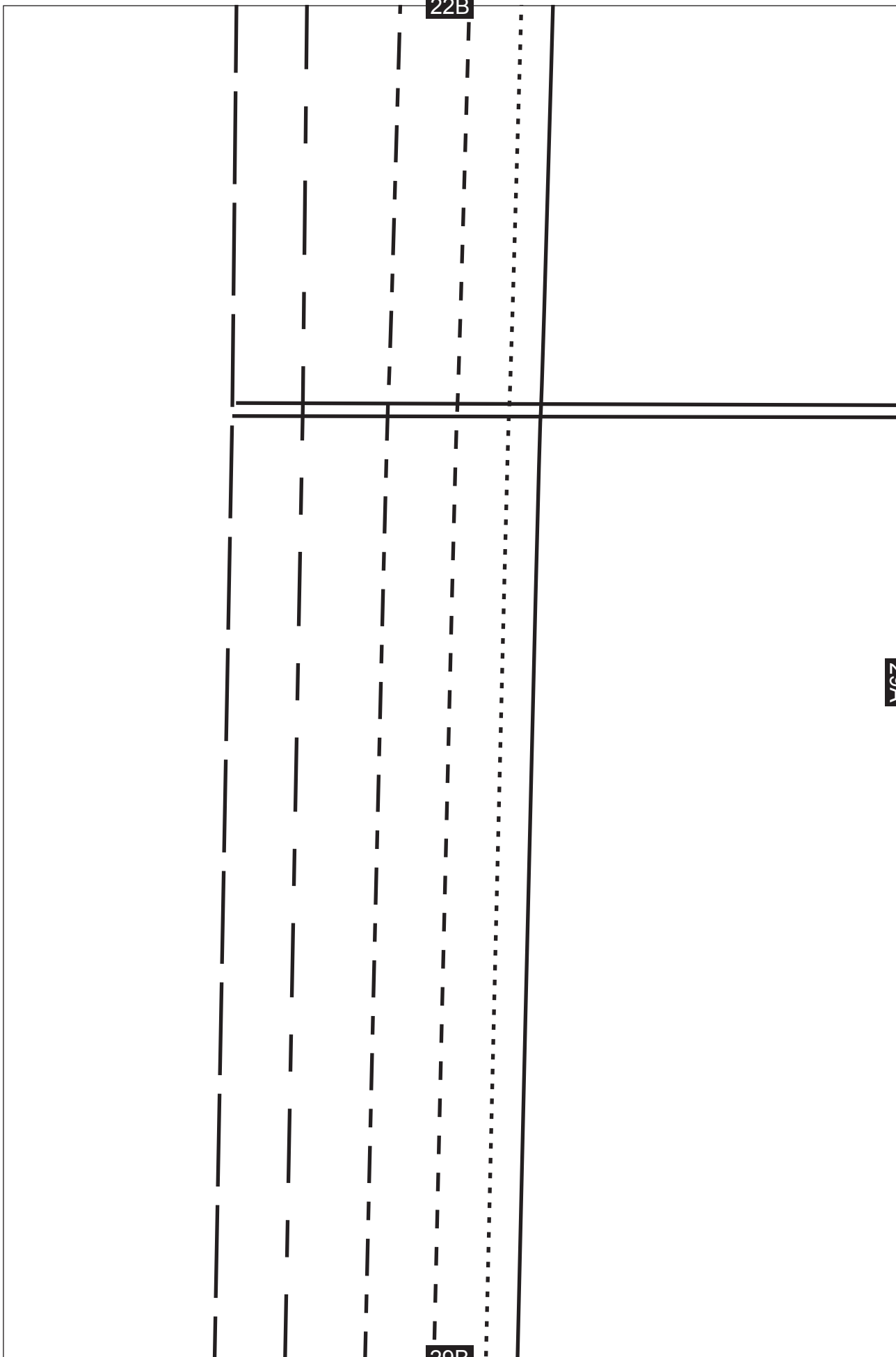


28B

22B

29A

29B



23B

LENGTHEN OR SHORTEN HERE

SKIRT FRONT

29A

30A

30B

24B

30A

31A

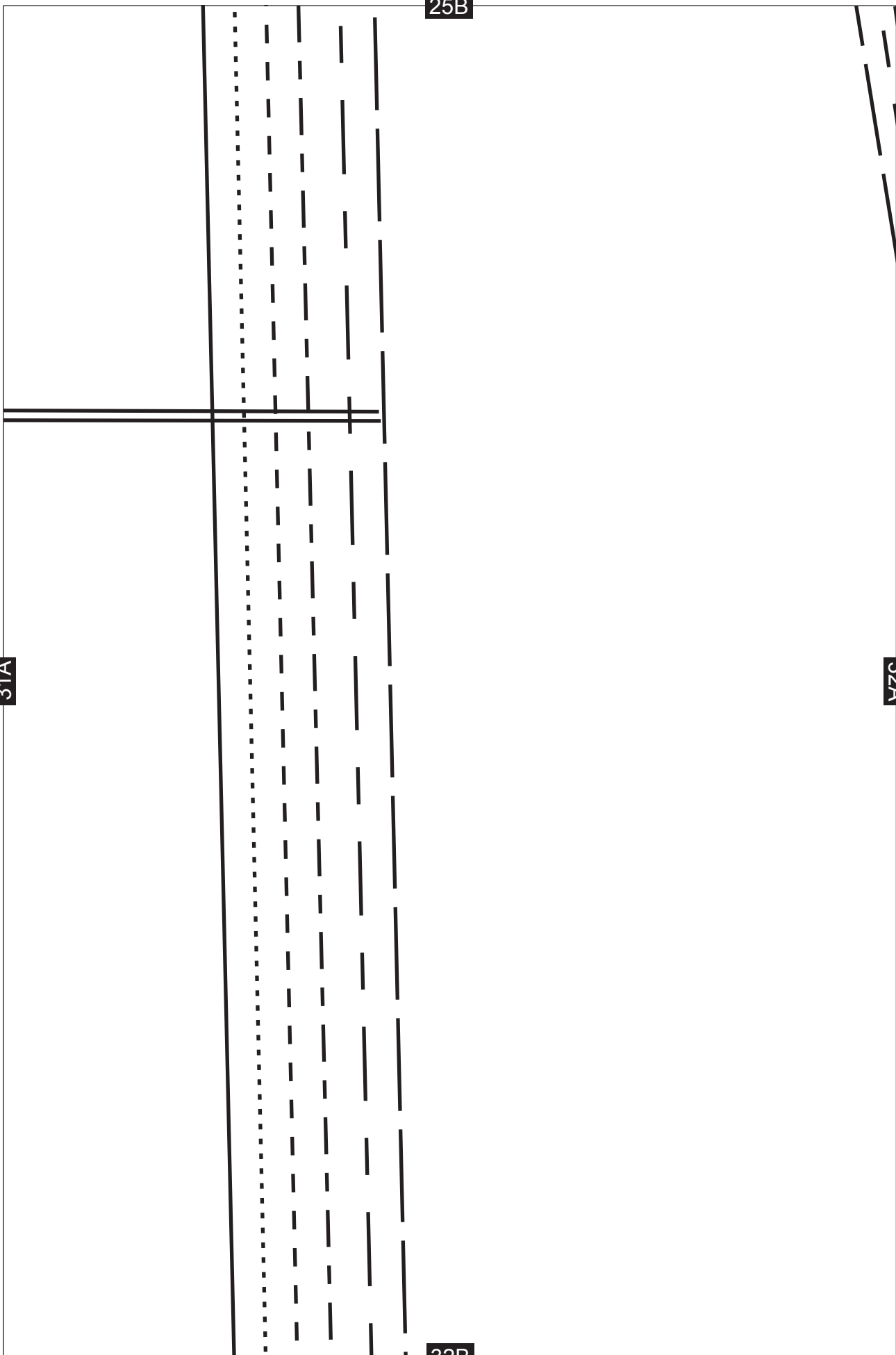
31B

25B

31A

32A

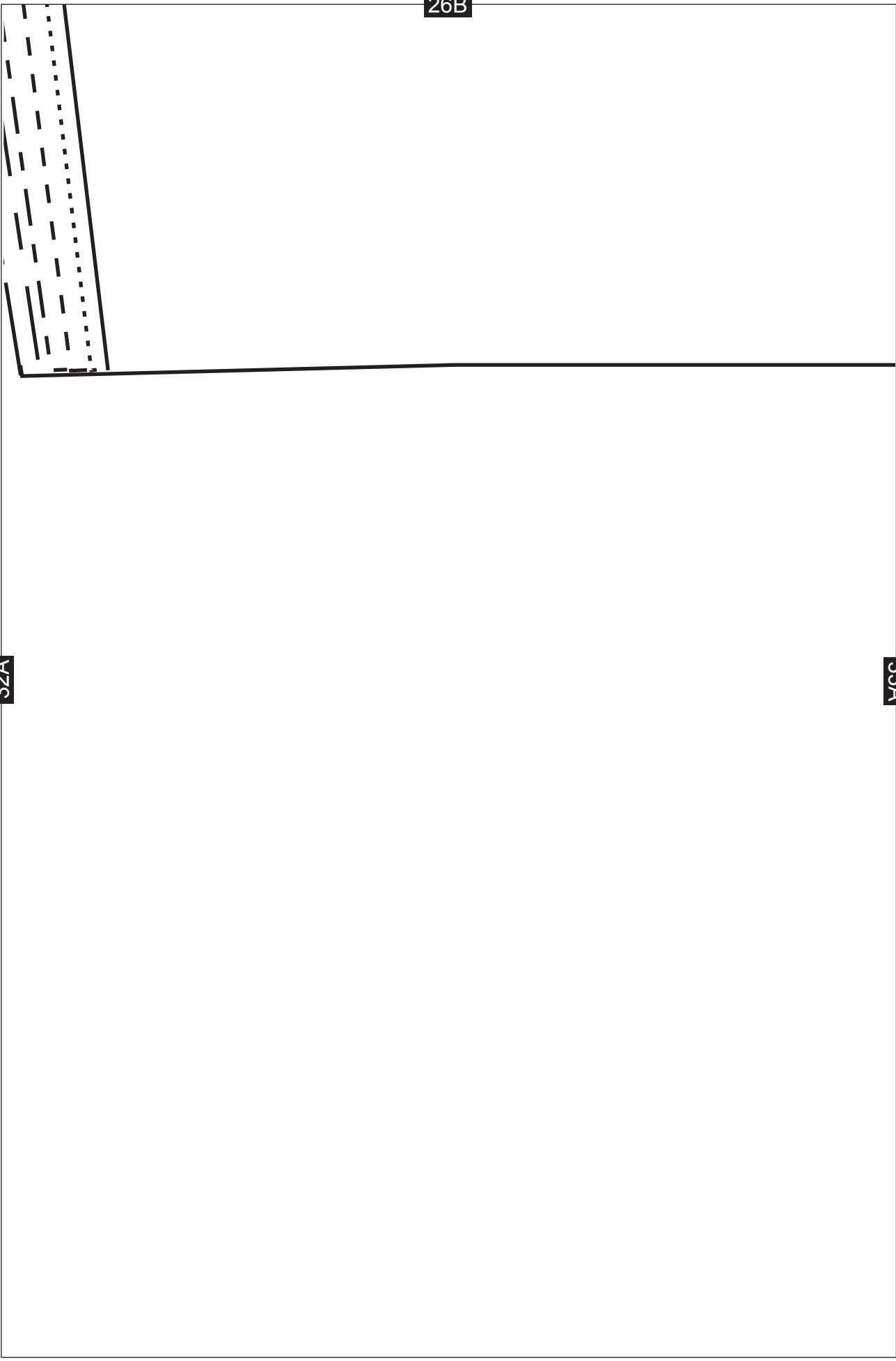
32B



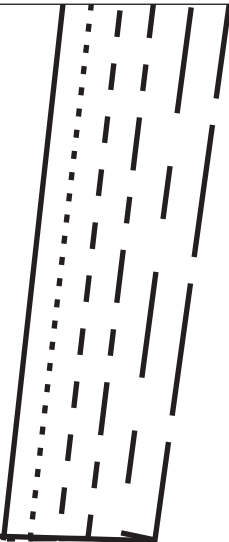
26B

32A

33A



27B

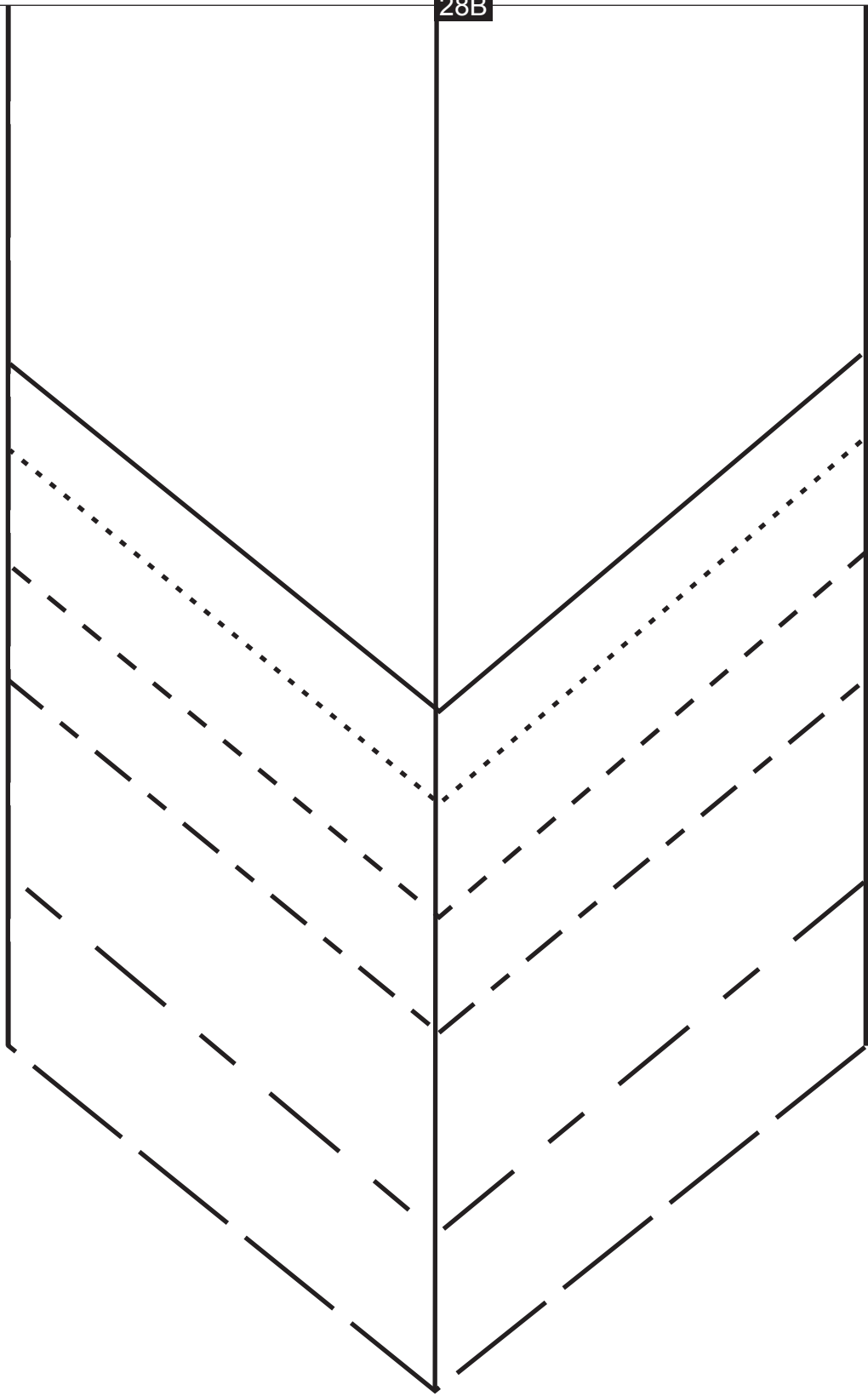


33A

34A

28B

34A



29B

36A

30B

36A

37A

31B

37A

38A

38A

32B

